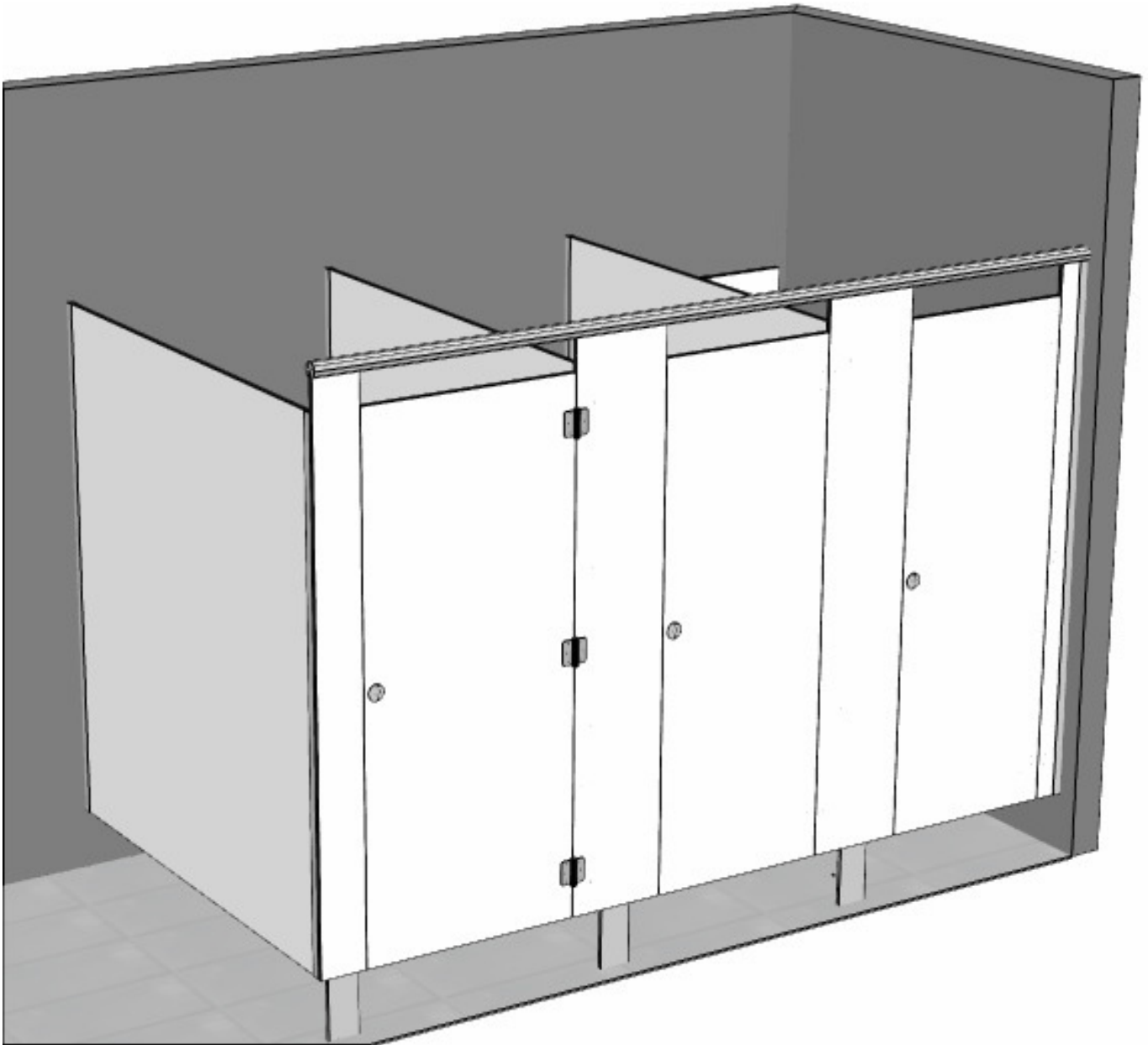


Cubispec

Exceptional Washroom &
Changeroom Systems



Saber

Toilet and Shower Partitioning

Blade Mounted / Headrail Braced

Saber

Saber is the latest partition system released by Cubispec Washroom Systems. The Blade mounted & Headrail braced system offers a modern take on the standard Pedestal at a very economical price point.

Available in a wide range of colours, materials and finishes for both shower and toilet cubicle construction, Saber features heavy duty head rail and channels, concealed fix designer hardware, and an optional gapless rebate door for enhanced privacy.



Features

- Blade Mounted for ease of cleaning
- Heavy Duty Aluminium Headrail for stability
- Concealed Fix designer hardware (Optional Slide Lock)
- Optional Gapless Rebated Door for Privacy
- Suitable for hard wearing applications
- Wide range of finishes available (Laminex, Polytec & many more)

Warranty

- Material – 10 Years
- Installation by Cubispec – LIFETIME

Board Options

- 13mm Compact Laminate
- 18mm, 25mm & 33mm Structural HMR MDF (Dry Areas only)
- 18mm, 25mm & 33mm MR Particleboard (Dry Areas only)

Applications

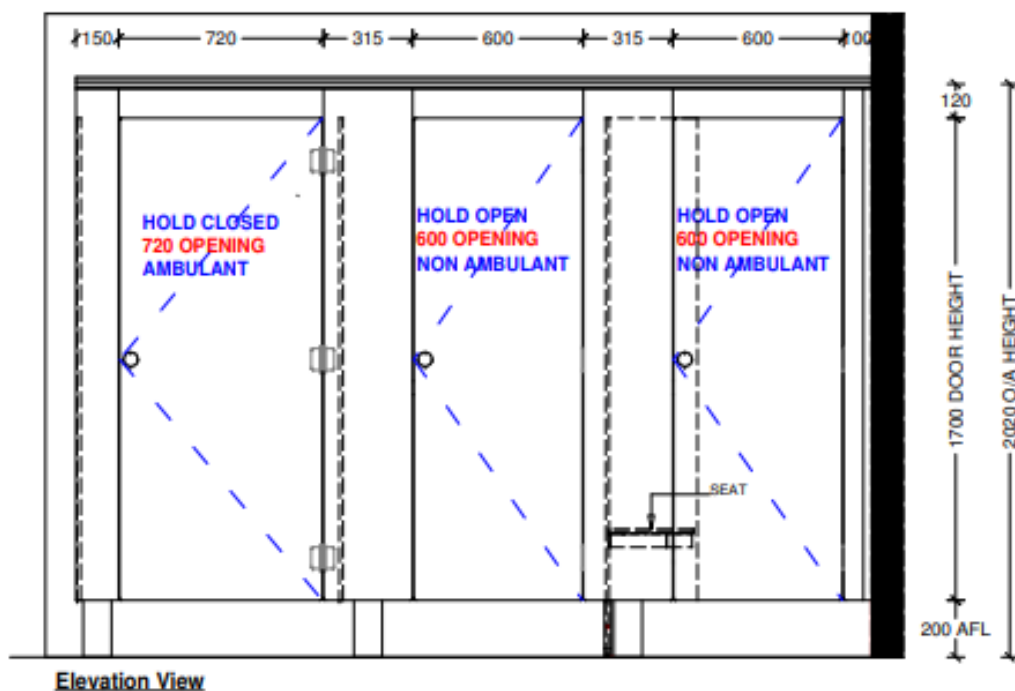
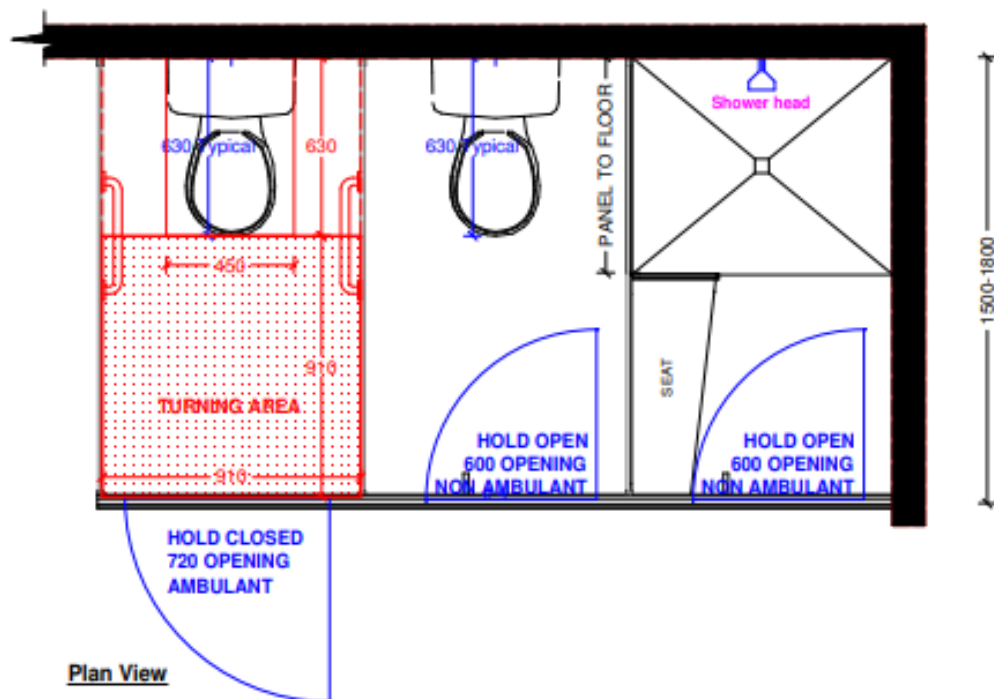
- Schools / Universities
- End Of Trip Facilities
- Changerooms
- Factory / Commercial
- Restaurants / Hotels
- Shopping Centres
- Ablution Blocks
- Corporate Office

Specifications

- Standard Overall Height - 2020mm AFL
- Standard Overall Depth - 1500mm (Min) to 1800mm (Max)
- Standard Frontal - 1800h (200mm AFL)
- Standard Door - 1700h (200mm AFL) x 600w (Standard) / 720w (Ambulant)
- Standard Division Panel - 1700h (200mm AFL)

Perspective View

2D Drawings



Cubispec

Exceptional Washroom &
Changeroom Systems

1800 951 235

info@cubispec.com.au

WA

21 - 25 Chisholm Crescent,
Kewdale WA 6105

VIC

62A Barrie Street
Tullamarine VIC 3043

Connect with us
on social media!