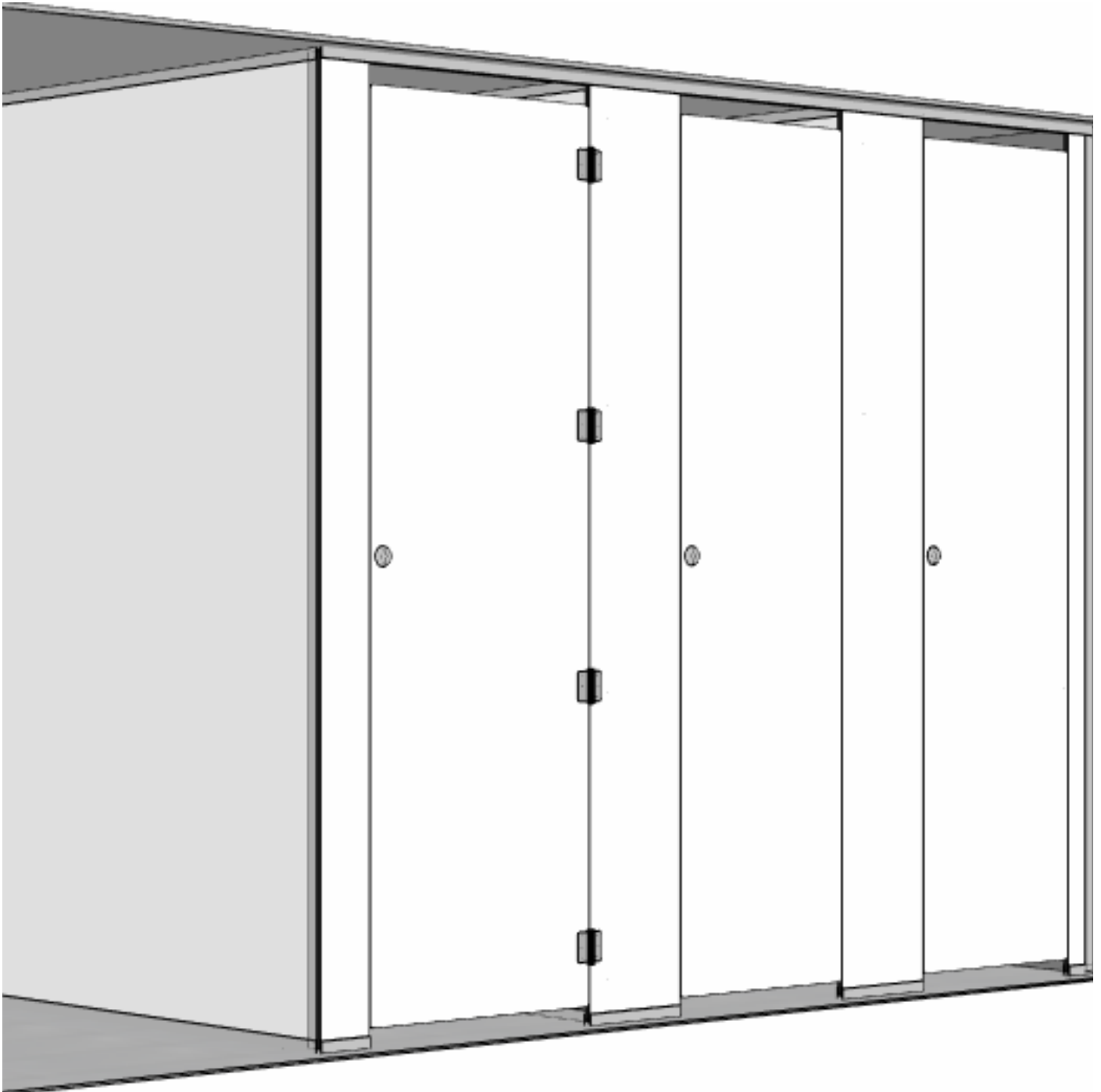


# Cubisp<sup>ec</sup>

Exceptional Washroom &  
Changeroom Systems



## Gladiator

Toilet Partitioning

Flour Mounted / Ceiling Mounted

# Gladiator

Crafted with meticulous attention to detail, the Gladiator range is specifically engineered to provide unparalleled privacy, making it the perfect solution for contemporary and luxurious Washroom, Changeroom, and EOT projects.

This exceptional range is specially designed to cater to the needs of Gender Neutral washrooms and bathrooms, ensuring inclusivity and versatility. The Gladiator system, known for its robust construction and long-lasting durability, embodies sleek and modern aesthetics, offering an array of captivating colour combinations.

Within the Gladiator collection, you'll discover a wide range of options, including an extensive selection of colours, materials, and finishes for constructing both Shower and Toilet cubicles. With its elegantly concealed designer hardware and the possibility of rebated doors, this collection guarantees utmost privacy while maintaining a seamless and sophisticated appearance.



## Features

- Floor Mounted for maximum privacy & security
- Floor to Ceiling system
- Floor Fixing – Aluminium U Channel
- Concealed Fix designer hardware (Optional Slide Lock)
- Optional Hidden Fixings to provide completely Flush Front aesthetic
- Optional Gapless Rebated Door for Privacy
- Suitable for hard wearing applications
- Wide range of finishes available (Laminex, Polytec & many more)

## Warranty

- Material – 10 Years
- Installation by Cubispec – LIFETIME

## Board Options

- 13mm Compact Laminate
- 18mm, 25mm & 33mm Structural HMR MDF (Dry Areas only)
- 18mm, 25mm & 33mm MR Particleboard (Dry Areas only)

## Applications

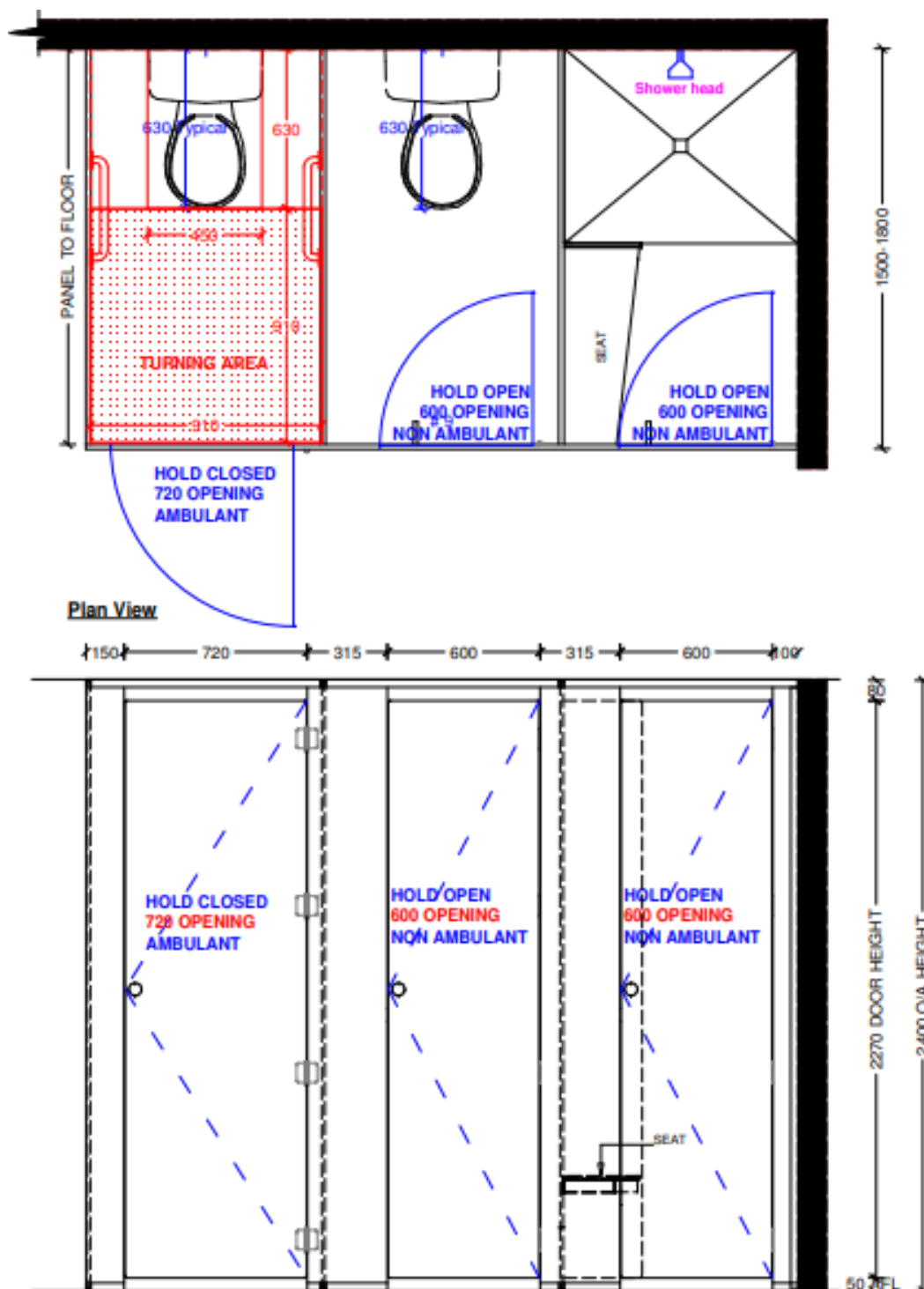
- Schools / Universities
- End Of Trip Facilities
- Changerooms
- Factory / Commercial
- Restaurants / Hotels
- Shopping Centres
- Ablution Blocks
- Corporate Office

## Specifications

- Standard Overall Height – 2400mm AFL (Ceiling Height)
- Standard Frontal – Floor to Ceiling
- Standard Door – 2270h (50mm AFL)
- Standard Division Panel – Floor to Ceiling

## Perspective View

2D Drawings



# Cubispec

Exceptional Washroom &  
Changeroom Systems

1800 951 235

[info@cubispec.com.au](mailto:info@cubispec.com.au)

WA

21 - 25 Chisholm Crescent,  
Kewdale WA 6105

VIC

62A Barrie Street  
Tullamarine VIC 3043

Connect with us  
on social media!